



**WATERTIGHT
PELI PROTECTOR CASES**

CATALOGUE

DECEMBER 2020



SINCE 1976

Photo by Iuros Podlogar



LIFETIME GUARANTEE*

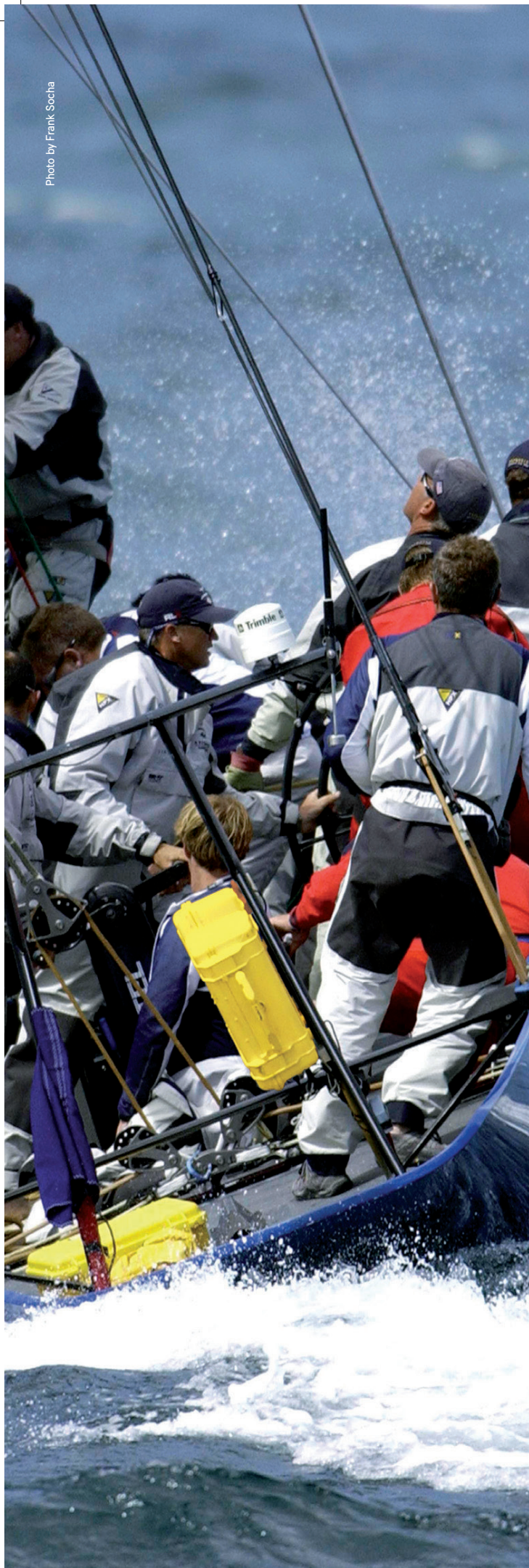


TABLE + OF CONTENTS

PELI CASES FEATURES	3
PELI CASE INTERIOR PROTECTION	4-5
PELI CASES	
Memory Card & Micro Cases	6-7
Small Cases	8
Laptop & Tablet Cases	9-11
Medium Cases	12-13
Large Cases	14-17
Long Cases	18-19
Cases Specifications	20-23
Case Accessories	22-23

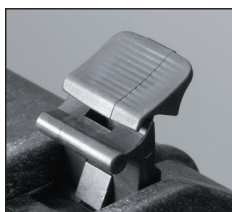


PELI CASES FEATURES

Rugged, uncompromising and trusted, Peli cases protect what matters to you, from the everyday to the extraordinary. Peli Protector Cases are made with copolymer polypropylene and cutting edge technology, which makes them virtually indestructible and resistant to the most extreme conditions. Proven for over 45 years in the most demanding environments. Engineered and manufactured in the U.S and in Germany. Guaranteed for Life and sustainable due to its long life.

+ STRONGER BY DESIGN

The Peli Protector Case™ uses an open cell core and solid wall construction, which is actually stronger and lighter than a solid core wall. Travel light with heavy protection. And you know it's a Peli™ Case by the distinctive dual band top surface. Stainless steel pins are used for hinges and handles. The Double-Throw latches are smarter and easier to open: it's the classic 'C' clamp design with a secondary movement that works like a pry bar to start the release and offers plenty of leverage to open with a light pull.



+ TESTED

The Peli™ Case design is the result of multiple generations of refinement. This evolution is proven through a battery of rigorous lab tests including drop, vibration, leak, heat and dust tests.



PELI CASES FEATURES

+ EASY RIDING



Stainless steel ball bearing wheels (on selected cases) last longer and ride smoother. The nylon hub adjacent to the stainless steel resists heat. Result: less wear and tear on the polyurethane tire.

- ① NYLON HUB
- ② STAINLESS STEEL BALL BEARING WHEELS
- ③ POLYURETHANE TIRE

+ REINFORCED PADLOCK PROTECTORS

Stainless steel reinforced padlock protectors provide added strength and extra security against cutting and theft.



+ WATERTIGHT

The secret is the tongue and groove fit with a polymer o-ring acting as a waterproof seal.



+ EXTRA PROTECTION



Peli's Pick N Pluck™ foam lets you customise the interior according to your gear. An easy, do-it-yourself system: layers of foam are pre-scored in tiny cubes. Simply measure your equipment over the grid and pluck away.

+ COOL UNDER PRESSURE

The Automatic Pressure Equalisation Valve releases built-up air pressure while keeping water molecules out, resulting in a watertight case that is even easier to open.



LEARN MORE AT WWW.PELICATALOGUE.COM/EN/PELI-PROTECTOR-CASE



PELI CASE INTERIOR PROTECTION

Peli™ Cases are available empty or with any of the following protection solutions.

Check how to install all accessories through our easy step-by-step Tutorial videos

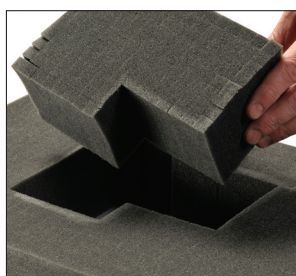


PELI CASE INTERIOR PROTECTION

+ PICK N PLUCK™ FOAM

An easy, do-it-yourself system for the interior of the case. Layers of foam are pre-scored in 1,27 cm or 2,54 cm cubes. Simply lay your equipment on the foam, tape or chalk to mark the foam, and pluck away. Always allow at least 2,5 cm of foam between your equipment and the case wall.

The following cases ship with solid foam instead of Pick N Pluck™ Foam: 1700, 1720, 1750



+ TREKPAK™ DIVIDERS*

The TrekPak™ system uses pre-installed wall sections, divider panels, locking pins and an infallible cutting tool. Just lay your gear in the case, measure and cut the divider sections and lock them in place with the steel U-pins.

* Trekpak™ is available for the following models: 1450, 1500, 1510, 1550, 1560, 1600, 1610, 1650.



+ CUSTOM FOAM SOLUTIONS



Custom foam and extreme solutions such as deck mount suspension systems will keep your delicate items protected on the inside.




+ PANEL FRAMES

Many Peli™ cases can be adapted for use with electronic interface panels by using a Panel Frame. Pre-drilled holes and stainless steel screws make fabricating a custom case a fast and accurate proposition.



A polymer o-ring seals the panel so the base of the case remains watertight, even with the lid open.

The following cases are adaptable for use with panel frames: 1120, 1150, 1200, 1300, 1400, 1430, 1450, 1470, 1490, 1500, 1520, 1550 (search for the icon )



- O-ring
- Panel Frame
- Attachment Hardware

See how to mount a panel frame here:



CASE CONTENTS NOT INCLUDED

+ LID ORGANISERS

Made of simulated leather or ballistic nylon with nylon zippers. A wide variety of pocket sizes protect and keep your gear organised. They install easily with Velcro® strips (included).



LID ORGANISER OPTIONS				
CASE	MESH	COMPUTER	PHOTO	EMS
1430			1439 Photo ^A	
1440	1449 Mesh ^A			
1490		1498 Computer ^B		
1495		1495 Computer ^B		
1500	1509 Mesh		1508 Photo	1505 EMS ^B
1510	1519 Mesh ^A			
1520	1509 Mesh		1508 Photo ^B	
1550				1555 EMS ^B
1560	1569 Mesh			
1600	1609 Mesh ^B			1605 EMS ^A
1610	1609 Mesh ^B			
1620	1609 Mesh ^B			
1630	1639 Mesh ^A			
1640	0379 Mesh ^A			
1650	1659 Mesh ^A			
1660	1669 Mesh ^A			
1690	1699 Mesh ^A			
0340	0349 Mesh ^A			
0350	0359 Mesh ^A			
0370	0379 Mesh ^A			

A= With mounting screws B= With mounting Velcro®

+ EZ-CLICK™ MOLLE PANEL

The first lid organiser of its kind that can quickly be released and swapped out without tools. Engineered to fit in the 1510 and 1560 Peli cases, the panel is compatible with user-supplied MOLLE pouches and Velcro™ brand straps.



NEW

+ ELECTRONIC INSTALLATIONS



Peli™ Case allows customisation for electronics. The copolymer material can be machined, drilled and sanded smooth. This makes the Peli™ Case suitable for use with bulkhead connectors.

CASE CONTENTS NOT INCLUDED

+ PADDED DIVIDERS

An alternative to Peli™ foam is our optional Padded Divider Sets. The compartments are connected with Velcro® so you can easily change the configuration according to your needs.



NEW!
YELLOW
DIVIDERS

PADDED DIVIDER OPTIONS			
CASE	LAYERS	CASE WITH DIVIDERS (CAT. NO.)	DIVIDER SET ONLY (CAT. NO.)
1450	1	1454	1455
1500	1	1504*	1505*
1510	1	1514*	1515*
1520	1	1524	1525
1550	1	1554*	1555*
1560	1	1564*	1565*
1600	1	1604	1605
1610	1	1614	1615
1620	2	1624	1625
1630	2	1634	1635
1640	2	1644	1645
1650	1	1654*	1655*
1660	2	1664	1665
1690	2	1694	1695
0340	2	0344	0345
0350	2	0354	0355
0370	2	0374	0375



* These cases/sets come with new high-visibility yellow dividers. All others with standard black dividers.

+ HYBRID PROTECTION

No longer choose between the versatility of the TrekPak™ divider system or the protection of the manually customisable Pick N Pluck™ foam. Peli™ Air Hybrid protection features both. Only available for the Peli™ 1510 case as a standard offering.



+ WE CUSTOMISE YOUR LOGO

Personalise your case with your company logo or have your name engraved on the nameplate. Logos can be applied in multiple colours as a Mylar® decal or as a vibrant fade-resistant, scratch-resistant hot-stamped ink.



MEMORY CARD & MICRO CASES

From small sensitive components to smartphones, protect your gear from the elements in a Memory Card Case or Micro Case from Peli™



PELI MEMORY CARD AND MICRO CASES

0915 CASE

INTERNAL DIMS:
12.2 x 5.7 x 1.4 cm
(4.79" x 2.25" x 0.55")

EXTERNAL DIMS:
14.1 x 8.3 x 2.2 cm
(5.55" x 3.27" x 0.85")

LID/BOTTOM DEPTH:
N/A

WEIGHT:
0.1 kg (0.22 lbs) WITH LINER

Stores 12 SD cards, 6 mini SD cards and 6 micro SD cards (not included)



0945 CASE

INTERNAL DIMS:
12.2 x 5.7 x 1.4 cm
(4.79" x 2.25" x 0.55")

EXTERNAL DIMS:
14.1 x 8.3 x 2.2 cm
(5.55" x 3.27" x 0.85")

LID/BOTTOM DEPTH:
N/A

WEIGHT:
0.1 kg (0.21 lbs) WITH LINER

Stores 6 compact flash cards (not included)



0955 CASE

INTERNAL DIMS:
12.2 x 5.7 x 1.4 cm
(4.79" x 2.25" x 0.55")

EXTERNAL DIMS:
14.1 x 8.3 x 2.2 cm
(5.55" x 3.27" x 0.85")

LID/BOTTOM DEPTH:
N/A

WEIGHT:
0.1 kg (0.22 lbs)



0965 CASE

INTERNAL DIMS:
12.2 x 5.7 x 1.4 cm
(4.79" x 2.25" x 0.55")

EXTERNAL DIMS:
14.1 x 8.3 x 2.2 cm
(5.55" x 3.27" x 0.85")

LID/BOTTOM DEPTH:
N/A

WEIGHT:
0.1 kg (0.22 lbs)

Stores XQD and CFexpress cards (not included)



CASE CONTENTS NOT INCLUDED

1010 MICRO CASE

INTERNAL DIMS:

11.1 x 7.3 x 4.3 cm
(4.37" x 2.87" x 1.68")

EXTERNAL DIMS:

14.9 x 10.3 x 5.4 cm
(5.88" x 4.06" x 2.12")

LID/BOTTOM DEPTH:

1.8 cm / 2.4 cm
(0.69" / 0.94")

WEIGHT:

0.19 kg (0.41lbs.) WITH FOAM
0.18 kg (0.4 lbs) NO FOAM



1015 MICRO CASE

INTERNAL DIMS:

13.1 x 6.7 x 3.5 cm
(5.14" x 2.64" x 1.37")

EXTERNAL DIMS:

17 x 9.9 x 4.7 cm
(6.68" x 3.88" x 1.86")

LID/BOTTOM DEPTH:

1.1 cm / 2.4 cm
(0.43" / 0.94")

WEIGHT:

0.21 kg (0.46 lbs)



1020 MICRO CASE

INTERNAL DIMS:

13.5 x 9 x 4.3 cm
(5.31" x 3.56" x 1.68")

EXTERNAL DIMS:

17.3 x 12.1 x 5.4 cm
(6.82" x 4.75" x 2.12")

LID/BOTTOM DEPTH:

1.8 cm / 2.4 cm (0.69" / 0.94")

WEIGHT:

0.25 kg (0.56 lbs) WITH FOAM
0.25 kg (0.55 lbs) NO FOAM



1030 MICRO CASE

INTERNAL DIMS:

16.2 x 6.7 x 5.2 cm
(6.37" x 2.62" x 2.06")

EXTERNAL DIMS:

19.1 x 9.8 x 6.2 cm
(7.5" x 3.87" x 2.43")

LID/BOTTOM DEPTH:

1.8 cm / 3.2 cm
(0.69" / 1.25")

WEIGHT:

0.28 kg (0.61 lbs) WITH FOAM
0.27 kg (0.6 lbs) NO FOAM



1040 MICRO CASE

INTERNAL DIMS:

16.5 x 9.8 x 4.4 cm
(6.5" x 3.87" x 1.75")

EXTERNAL DIMS:

19.1 x 12.9 x 5.4 cm
(7.5" x 5.06" x 2.12")

LID/BOTTOM DEPTH:

1.8 cm / 2.4 cm
(0.69" / 0.94")

WEIGHT:

0.32 kg (0.71 lbs) WITH FOAM
0.32 kg (0.7 lbs) NO FOAM



1050 MICRO CASE

INTERNAL DIMS:

16 x 9.3 x 7 cm
(6.31" x 3.68" x 2.75")

EXTERNAL DIMS:

20.3 x 12.9 x 7.9 cm
(7.99" x 5.06" x 3.12")

LID/BOTTOM DEPTH:

1.8 cm / 4.9 cm
(0.69" / 1.94")

WEIGHT:

0.38 kg (0.83 lbs) WITH FOAM
0.37 kg (0.81 lbs) NO FOAM



1060 MICRO CASE

INTERNAL DIMS:

21 x 10.8 x 5.7 cm
(8.25" x 4.25" x 2.25")

EXTERNAL DIMS:

25.1 x 14.2 x 6.7 cm
(9.88" x 5.59" x 2.63")

LID/BOTTOM DEPTH:

1.8 cm / 3.7 cm
(0.69" / 1.44")

WEIGHT:

0.47 kg (1.03 lbs) WITH FOAM
0.45 kg (1 lbs) NO FOAM



SMALL CASES

Lightweight, but extremely strong; compact, yet fully capable. Perfect for valuable gear like hand tools and small to medium electronic components, hand held GPS systems, and DSLR cameras. All small cases are available empty or with pre-scored Pick N Pluck™ foam.



1120 CASE

INTERNAL DIMS:
18.5 x 12.1 x 8.5 cm
(7.29" x 4.78" x 3.33")

EXTERNAL DIMS:
21.4 x 17.2 x 9.8 cm
(8.41" x 6.76" x 3.87")

LID/BOTTOM DEPTH:
1.3 cm / 6.5 cm (0.5" / 2.56")

WEIGHT:
0.65 kg (1.43 lbs) WITH FOAM
0.61 kg (1.34 lbs) NO FOAM



1150 CASE

INTERNAL DIMS:
21.1 x 14.7 x 9.5 cm
(8.29" x 5.79" x 3.75")

EXTERNAL DIMS:
24 x 19.8 x 10.9 cm
(9.44" x 7.8" x 4.29")

LID/BOTTOM DEPTH:
1.9 cm / 7.3 cm (0.75" / 2.87")

WEIGHT:
0.79 kg (1.75 lbs) WITH FOAM
0.73 kg (1.61 lbs) NO FOAM



1170 CASE

INTERNAL DIMS:
26.8 x 15.3 x 8 cm
(10.54" x 6.04" x 3.16")

EXTERNAL DIMS:
29.6 x 21.2 x 9.6 cm
(11.64" x 8.34" x 3.78")

LID/BOTTOM DEPTH:
2.7 cm / 5.3 cm
(1.08" / 2.08")

WEIGHT:
0.95 kg (2.1 lbs) WITH FOAM
0.89 kg (1.96 lbs) NO FOAM



1200 CASE

INTERNAL DIMS:
23.5 x 18.1 x 10.5 cm
(9.25" x 7.12" x 4.12")

EXTERNAL DIMS:
27 x 24.6 x 12.4 cm
(10.62" x 9.68" x 4.87")

LID/BOTTOM DEPTH:
3 cm / 7.4 cm (1.18" / 2.93")

WEIGHT:
1.3 kg (2.87 lbs) WITH FOAM
1.2 kg (2.65 lbs) NO FOAM



1300 CASE

INTERNAL DIMS:
23.3 x 17.8 x 15.5 cm
(9.17" x 7" x 6.12")

EXTERNAL DIMS:
27 x 24.6 x 17.4 cm
(10.62" x 9.68" x 6.87")

LID/BOTTOM DEPTH:
3 cm / 12.5 cm (1.18" / 4.93")

WEIGHT:
1.6 kg (3.53 lbs) WITH FOAM
1.4 kg (3.09 lbs) NO FOAM



1400 CASE

INTERNAL DIMS:
30.1 x 22.8 x 13.1 cm
(11.87" x 8.97" x 5.15")

EXTERNAL DIMS:
34.7 x 29.5 x 14.6 cm
(13.68" x 11.61" x 5.75")

LID/BOTTOM DEPTH:
3 cm / 10.2 cm (1.18" / 4")

WEIGHT:
2 kg (4.41 lbs) WITH FOAM
1.8 kg (3.97 lbs) NO FOAM



Adaptable for use with panel frame

*Other colours and configurations available upon minimum quantities. Check with your Customer Service representative for further details.

CASE CONTENTS NOT INCLUDED

LAPTOP & TABLET CASES

The Peli line of tablet and laptop cases feature revolutionary design, construction and durability. Peli HardBack™ cases are available in many sizes and insert options. Moulded plush shock absorbing liner protects from impact and won't scratch your device—superior protection for your office on the go!



PELI LAPTOP & TABLET CASES

1070CC HARDBACK™ CASE

INTERNAL DIMS:
32.5 x 22.7 x 1.8 cm
(12.8" x 8.95" x 0.72")

EXTERNAL DIMS:
38.8 x 30.4 x 4.1 cm
(15.29" x 11.96" x 1.6")

LID/BOTTOM DEPTH:
0.9 cm (0.36")

WEIGHT:
1.3 kg (2.8 lbs) WITH FOAM
1.1 kg (2.32 lbs) NO FOAM



1075 HARDBACK™ CASE

INTERNAL DIMS:
28.2 x 20.1 x 4.1 cm
(11.11" x 7.92" x 1.63")

EXTERNAL DIMS:
31.4 x 24.8 x 5.4 cm
(12.38" x 9.75" x 2.13")

LID/BOTTOM DEPTH:
2.1 cm (0.81")

WEIGHT:
0.7 kg (1.54 lbs) WITH FOAM
0.6 kg (1.41 lbs) NO FOAM



CASE CONTENTS NOT INCLUDED

For the most up-to-date information, please visit www.peli.com or www.pelicalatalogue.com

PELI CASES CATALOGUE | 9

1085 HARDBACK™ CASE

INTERNAL DIMS:
36.3 x 26.3 x 5 cm
(14.29" x 10.37" x 1.97")

EXTERNAL DIMS:
39.7 x 31.5 x 6.4 cm
(15.64" x 12.41" x 2.5")

LID/BOTTOM DEPTH:
2.5 cm (0.99")

WEIGHT:
1.4 kg (3.1 lbs) WITH FOAM
1.2 kg (2.65 lbs) NO FOAM



1095 HARDBACK™ CASE

INTERNAL DIMS:
40.1 x 28.3 x 5.2 cm
(15.78" x 11.16" x 2.06")

EXTERNAL DIMS:
43.6 x 33.6 x 6.6 cm
(17.18" x 13.24" x 2.6")

LID/BOTTOM DEPTH:
2.6 cm (1.03")

WEIGHT:
1.6 kg (3.49 lbs) WITH FOAM
1.4 kg (3.05 lbs) NO FOAM



1095CC HARDBACK™ CASE

INTERNAL DIMS:
40.1 x 28.3 x 5.2 cm
(15.78" x 11.16" x 2.06")

EXTERNAL DIMS:
43.6 x 33.6 x 6.6 cm
(17.18" x 13.24" x 2.6")

LID/BOTTOM DEPTH:
2.6 cm (1.03")

WEIGHT:
1.5 kg (3.29 lbs) WITH FOAM



1470 CASE

INTERNAL DIMS:
39.9 x 27.2 x 9.8 cm
(15.7" x 10.7" x 3.87")

EXTERNAL DIMS:
42.9 x 33.6 x 11.4 cm
(16.88" x 13.23" x 4.47")

LID/BOTTOM DEPTH:
3.7 cm / 6.1 cm (1.47" / 2.4")

WEIGHT:
2.5 kg (5.51 lbs) WITH FOAM
1.94 kg (4.28 lbs) NO FOAM



1490 CASE

INTERNAL DIMS:
45.1 x 28.9 x 10.5 cm
(17.75" x 11.37" x 4.12")

EXTERNAL DIMS:
50.5 x 35.4 x 11.9 cm
(19.87" x 13.93" x 4.68")

LID/BOTTOM DEPTH:
3.8 cm / 6.7 cm (1.5" / 2.62")

WEIGHT:
2.95 kg (6.5 lbs) WITH FOAM
2.48 kg (5.47 lbs) NO FOAM



1490CC1 CASE

INTERNAL DIMS:
45.1 x 28.9 x 10.5 cm
(17.75" x 11.37" x 4.12")

EXTERNAL DIMS:
50.5 x 35.4 x 11.9 cm
(19.87" x 13.93" x 4.68")

LID/BOTTOM DEPTH:
3.8 cm / 6.7 cm (1.5" / 2.62")

WEIGHT:
2.95 kg (6.5 lbs) WITH FOAM
2.48 kg (5.47 lbs) NO FOAM



1495 CASE

INTERNAL DIMS:
47.9 x 33.3 x 9.7 cm
(18.87" x 13.12" x 3.81")

EXTERNAL DIMS:
54.9 x 43.8 x 12.4 cm
(21.62" x 17.25" x 4.87")

LID/BOTTOM DEPTH:
2.8 cm / 6.8 cm (1.12" / 2.68")

WEIGHT:
3.8 kg (8.37 lbs) WITH FOAM
3.28 kg (7.23 lbs) NO FOAM



Adaptable for use with panel frame

CASE CONTENTS NOT INCLUDED



Photo by Alejandro Saguesuela

1495CC1 CASE

INTERNAL DIMS:
47.9 x 33.3 x 9.7 cm
(18.87" x 13.12" x 3.81")

EXTERNAL DIMS:
54.9 x 43.8 x 12.4 cm
(21.62" x 17.25" x 4.87")

LID/BOTTOM DEPTH:
2.8 cm / 6.8 cm (1.12" / 2.68")

WEIGHT:
5.03 kg (11.1 lbs)



1495CC2 CASE

INTERNAL DIMS:
47.9 x 33.3 x 9.7 cm
(18.87" x 13.12" x 3.81")

EXTERNAL DIMS:
54.9 x 43.8 x 12.4 cm
(21.62" x 17.25" x 4.87")

LID/BOTTOM DEPTH:
2.8 cm / 6.8 cm (1.12" / 2.68")

WEIGHT:
4.08 kg (8.99 lbs)



1430 TOP LOADER CASE

INTERNAL DIMS:
34.4 x 14.6 x 29.7 cm
(13.56" x 5.76" x 11.7")

EXTERNAL DIMS:
41.7 x 22.1 x 33.4 cm
(16.4" x 8.71" x 13.15")

LID/BOTTOM DEPTH:
5.1 cm / 24.6 cm (2" / 9.7")

WEIGHT:
2.95 kg (6.5 lbs) WITH FOAM
2.54 kg (5.6 lbs) NO FOAM



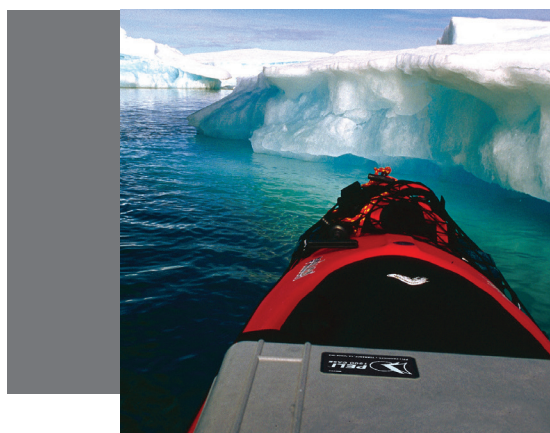
1440 TOP LOADER CASE

INTERNAL DIMS:
43.4 x 19.1 x 40.6 cm
(17.1" x 7.5" x 16")

EXTERNAL DIMS:
50 x 30.5 x 45.7 cm
(19.7" x 12" x 18")

LID/BOTTOM DEPTH:
5.1 cm / 35.6 cm (2" / 14")

WEIGHT:
7.48 kg (16.5 lbs) WITH FOAM
6.58 kg (14.5 lbs) NO FOAM



CRUSHED ICE OPTIONAL

We chose the best gear that we could get our hands on, including Pelican™ boxes to safeguard our camera gear, radios and satellite telephone. At 81° North latitude, one of our plastic kayaks, with a Pelican™ box mounted on deck, became caught in the current-driven ice pack and was thoroughly steamrolled. Many items loaded inside the kayak were crushed, but the Pelican™ deck box emerged through it all unscathed.

Steve Smith, Arctic explorer

SURVIVAL

+ STORIES

✓ Adaptable for use with panel frame

CASE CONTENTS NOT INCLUDED

*Other colours and configurations available upon minimum quantities. Check with your Customer Service representative for further details.

MEDIUM CASES

Mobility with room for protecting larger gear or multiple instruments and accessories. Interior options are available for extra protection. Selected models meet carry-on luggage specifications. * Most cases are available empty, with foam or padded dividers. See chart on page 20.

1450 CASE Similarly sized Peli Storm Case: iM2200

INTERNAL DIMS:

37.4 x 26 x 15.4 cm
(14.72" x 10.22" x 6.08")

EXTERNAL DIMS:

40.9 x 33.1 x 17.5 cm
(16.1" x 13.03" x 6.88")

LID/BOTTOM DEPTH:

4.4 cm / 11.1 cm (1.75" / 4.37")

WEIGHT:

2.9 kg (6.39 lbs) WITH FOAM
2.5 kg (5.51 lbs) NO FOAM



Look for this icon for wheels on selected models.

*Check with your airline for exact measurement requirements

1460 CASE

INTERNAL DIMS:

47.1 x 25.2 x 27.7 cm
(18.54" x 9.92" x 10.92")

EXTERNAL DIMS:

53 x 32.3 x 32.4 cm
(20.85" x 12.73" x 12.75")

LID/BOTTOM DEPTH:

12.5 cm / 15.3 cm (4.91" / 6.01")

WEIGHT:

5.66 kg (12.48 lbs) WITH FOAM
3.97 kg (8.75 lbs) NO FOAM



1460 TOOL CASE

INTERNAL DIMS:

47.1 x 25.2 x 27.7 cm
(18.54" x 9.92" x 10.92")

EXTERNAL DIMS:

53 x 32.3 x 32.4 cm
(20.85" x 12.73" x 12.75")

LID/BOTTOM DEPTH:

12.5 cm / 15.3 cm
(4.91" / 6.01")

WEIGHT:

5.9 kg (13 lbs) WITH TRAY ASSEMBLY



1460 EMS CASE

INTERNAL DIMS:

47.1 x 25.2 x 27.7 cm
(18.54" x 9.92" x 10.92")

EXTERNAL DIMS:

53 x 32.3 x 32.4 cm
(20.85" x 12.73" x 12.75")

LID/BOTTOM DEPTH:

12.5 cm / 15.3 cm (4.91" / 6.01")

WEIGHT:

8.26 kg (18.2 lbs)
WITH TRAY ASSEMBLY



1500 CASE Similarly sized Peli Storm Case: iM2300

INTERNAL DIMS:

42.8 x 28.6 x 15.5 cm
(16.84" x 11.27" x 6.09")

EXTERNAL DIMS:

47.1 x 35.7 x 17.5 cm
(18.54" x 14.05" x 6.89")

LID/BOTTOM DEPTH:

4.6 cm / 10.9 cm (1.81" / 4.31")

WEIGHT:

3.2 kg (7.05 lbs) WITH FOAM
2.9 kg (6.39 lbs) NO FOAM



✓ Adaptable for use with panel frame

*Other colours and configurations available upon minimum quantities. Check with your Customer Service representative for further details.

CASE CONTENTS NOT INCLUDED

1510 CASE

Similarly sized Peli Storm Case: iM2500

INTERNAL DIMS:

50.1 x 27.9 x 19.3 cm
(19.75" x 11" x 7.6")

EXTERNAL DIMS:

55.9 x 35.1 x 22.9 cm
(22" x 13.81" x 9")

LID/BOTTOM DEPTH:

4.5 cm / 14.7 cm (1.79" / 5.79")

WEIGHT:

6.17 kg (13.6 lbs) WITH FOAM
5.44 kg (11.99 lbs) NO FOAM



1510M CASE

INTERNAL DIMS:

50.2 x 27.9 x 19.3 cm
(19.75" x 11" x 7.6")

EXTERNAL DIMS:

59.8 x 36.5 x 27 cm
(23.55" x 14.36" x 10.62")

LID/BOTTOM DEPTH:

4.5 cm / 14.7 cm (1.79" / 5.79")

WEIGHT:

8.1 kg (17.91 lbs) WITH FOAM
7.4 kg (16.3 lbs) NO FOAM



1510TPF HYBRID CASE

Similarly sized Peli Storm Case: iM2500

INTERNAL DIMS:

50.1 x 27.9 x 19.3 cm
(19.75" x 11" x 7.6")

EXTERNAL DIMS:

55.9 x 35.1 x 22.9 cm
(22" x 13.81" x 9")

LID/BOTTOM DEPTH:

4.5 cm / 14.7 cm (1.79" / 5.79")

WEIGHT:

6.77 kg (14.94 lbs)



1510 LOC CASE

Similarly sized Peli Storm Case: iM2500

INTERNAL DIMS:

50.2 x 27.9 x 19.3 cm
(19.75" x 11" x 7.6")

EXTERNAL DIMS:

55.9 x 35.1 x 22.9 cm
(22" x 13.81" x 9")

LID/BOTTOM DEPTH:

4.5 cm / 14.7 cm (1.79" / 5.79")

WEIGHT:

6.2 kg (13.6 lbs) WITH FOAM
5.4 kg (11.99 lbs) NO FOAM



1510 SC CASE

INTERNAL DIMS:

50.2 x 27.9 x 19.3 cm
(19.75" x 11" x 7.6")

EXTERNAL DIMS:

55.9 x 35.1 x 22.9 cm
(22" x 13.81" x 9")

LID/BOTTOM DEPTH:

4.5 cm / 14.7 cm (1.79" / 5.79")

WEIGHT:

6.2 kg (13.6 lbs) WITH FOAM
5.4 kg (11.99 lbs) NO FOAM



1510 LFC CASE

INTERNAL DIMS:

50.2 x 27.9 x 19.3 cm
(19.75" x 11" x 7.6")

EXTERNAL DIMS:

55.9 x 35.1 x 22.9 cm
(22" x 13.81" x 9")

LID/BOTTOM DEPTH:

4.5 cm / 14.7 cm
(1.79" / 5.79")

WEIGHT:

6.2 kg (13.6 lbs) WITH FOAM
5.4 kg (11.99 lbs) NO FOAM



1520 CASE

Similarly sized Peli Storm Case: iM2400

INTERNAL DIMS:

44.9 x 31.8 x 17.1 cm
(17.68" x 12.53" x 6.73")

EXTERNAL DIMS:

49.9 x 39.3 x 19.1 cm
(19.65" x 15.49" x 7.53")

LID/BOTTOM DEPTH:

4.5 cm / 12.5 cm (1.79" / 4.93")

WEIGHT:

4.24 kg (9.35 lbs) WITH FOAM
3.76 kg (8.29 lbs) NO FOAM



1550 CASE

Similarly sized Peli Storm Case: iM2600

INTERNAL DIMS:

47.3 x 36 x 19.6 cm
(18.63" x 14.18" x 7.71")

EXTERNAL DIMS:

52.5 x 43.5 x 21.6 cm
(20.66" x 17.12" x 8.51")

LID/BOTTOM DEPTH:

4.4 cm / 14.9 cm (1.75" / 5.87")

WEIGHT:

5.4 kg (11.9 lbs) WITH FOAM
4.8 kg (10.58 lbs) NO FOAM



Adaptable for use with panel frame

CASE CONTENTS NOT INCLUDED

*Other colours and configurations available upon minimum quantities. Check with your Customer Service representative for further details.

LARGE CASES

Designed for extreme protection during transport and storage. Customisable interiors allow for extra protection and inventory control. Selected models feature retractable handles, extra wide grips and sturdy casters for efficient mobility. See chart on page 22.



PELI LARGE CASES

1560 CASE

INTERNAL DIMS:

50.6 x 38 x 22.9 cm
(19.92" x 14.98" x 9")

EXTERNAL DIMS:

56 x 45.5 x 26.5 cm
(22.07" x 17.92" x 10.42")

LID/BOTTOM DEPTH:

5.1 cm / 17.8 cm (2" / 7")

WEIGHT:

9.07 kg (20 lbs) WITH FOAM
7.71 kg (17 lbs) NO FOAM



1560M CASE

INTERNAL DIMS:

50.6 x 38 x 22.9 cm
(19.92" x 14.98" x 9")

EXTERNAL DIMS:

60.4 x 46.6 x 30.7 cm
(23.78" x 18.33" x 12.08")

LID/BOTTOM DEPTH:

5.1 cm / 17.8 cm (2" / 7")

WEIGHT:

11 kg (24.3 LBS) WITH FOAM
9.7 kg (21.3 LBS) NO FOAM



1560LOC CASE

INTERNAL DIMS:

50.6 x 38 x 22.9 cm
(19.92" x 14.98" x 9")

EXTERNAL DIMS:

56.1 x 45.5 x 26.5 cm
(22.07" x 17.92" x 10.42")

LID/BOTTOM DEPTH:

5.1 cm / 17.8 cm (2" / 7")

WEIGHT:

8.2 kg (18.18 lbs) WITH FOAM
7.7 kg (17 lbs) NO FOAM



1560SC CASE

INTERNAL DIMS:

50.6 x 38 x 22.9 cm
(19.92" x 14.98" x 9")

EXTERNAL DIMS:

56.1 x 45.5 x 26.5 cm
(22.07" x 17.92" x 10.42")

LID/BOTTOM DEPTH:

5.1 cm / 17.8 cm (2" / 7")

WEIGHT:

8.2 kg (18.18 lbs) WITH FOAM
7.7 kg (17 lbs) NO FOAM



*Other colours and configurations available upon minimum quantities. Check with your Customer Service representative for further details.

CASE CONTENTS NOT INCLUDED

1560LFC CASE

INTERNAL DIMS:

50.6 x 38 x 22.9 cm
(19.92" x 14.98" x 9")

EXTERNAL DIMS:

56.1 x 45.5 x 26.5 cm
(22.07" x 17.92" x 10.42")

LID/BOTTOM DEPTH:

5.1 cm / 17.8 cm (2" / 7")

WEIGHT:

8.2 kg (18.18 lbs) WITH FOAM
7.7 kg (17 lbs) NO FOAM



1600 CASE

Similarly sized Peli Storm Case: iM2700

INTERNAL DIMS:

54.6 x 42 x 20.2 cm
(21.51" x 16.54" x 7.95")

EXTERNAL DIMS:

61.8 x 49.4 x 22.2 cm
(24.35" x 19.46" x 8.75")

LID/BOTTOM DEPTH:

4.4 cm / 15.5 cm
(1.75" / 6.12")

WEIGHT:

6.4 kg (14.11 lbs) WITH FOAM
5.9 kg (13 lbs) NO FOAM



1610 CASE

Similarly sized Peli Storm Case: iM2720

INTERNAL DIMS:

55.1 x 42.2 x 26.8 cm
(21.68" x 16.62" x 10.56")

EXTERNAL DIMS:

62.8 x 49.7 x 30.3 cm
(24.71" x 19.58" x 11.93")

LID/BOTTOM DEPTH:

5.2 cm / 21.6 cm (2.06" / 8.5")

WEIGHT:

10.2 kg (22.49 lbs) WITH FOAM
9.1 kg (20 lbs) NO FOAM



1610M CASE

INTERNAL DIMS:

55.3 x 42.4 x 27 cm
(21.78" x 16.69" x 10.62")

EXTERNAL DIMS:

66.5 x 58.4 x 34.7 cm
(26.2" x 23" x 13.68")

LID/BOTTOM DEPTH:

5.2 cm / 21.8 cm (2.05" / 8.57")

WEIGHT:

13.2 kg (29.1 lbs) WITH FOAM
11.9 kg (26.3 lbs) NO FOAM



1620 CASE

Similarly sized Peli Storm Case: iM2750

INTERNAL DIMS:

54.3 x 41.4 x 31.9 cm
(21.37" x 16.31" x 12.56")

EXTERNAL DIMS:

63 x 49.2 x 35.2 cm
(24.81" x 19.37" x 13.87")

LID/BOTTOM DEPTH:

5.2 cm / 26.7 cm (2.06" / 10.5")

WEIGHT:

11.8 kg (26.01 lbs) WITH FOAM
11.1 kg (24.47 lbs) NO FOAM



1620M CASE

INTERNAL DIMS:

54.6 x 41.7 x 31.9 cm
(21.48" x 16.42" x 12.54")

EXTERNAL DIMS:

66.5 x 58.4 x 39.6 cm
(26.2" x 23" x 15.61")

LID/BOTTOM DEPTH:

5.1 cm / 26.7 cm
(2.01" / 10.53")

WEIGHT:

14.3 kg (31.42 lbs) WITH FOAM
12.7 kg (28 lbs) NO FOAM



PELI LARGE CASES



INTACT AFTER MASSIVE EXPLOSION

My team and I were first responders to a terrorist attack on a hotel in Islamabad, Pakistan. As part of our recovery effort at the blast site, we 'repatriated' one of our armored vehicles. Inside the vehicle, which was in the immediate impact zone of the SVBIED, we discovered an unscathed 'Model 1640 Peli Transport Case™.' The case stood up against a massive explosion and flying shrapnel. Seeing how well this product withstood this type of abuse, I can say that you have found yourself several new lifetime customers!

US Federal Agent

SURVIVAL

+ STORIES

CASE CONTENTS NOT INCLUDED

*Other colours and configurations available upon minimum quantities. Check with your Customer Service representative for further details.

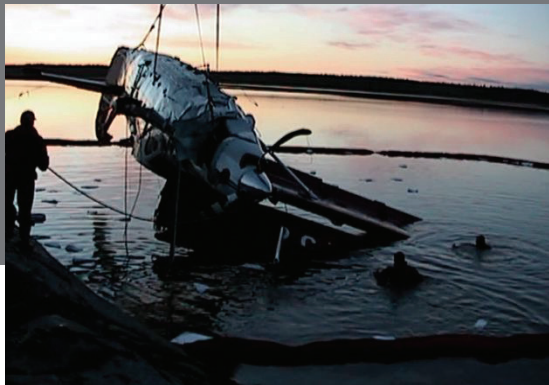
For the most up-to-date information, please visit www.peli.com or www.pelicatalogue.com

PELI CASES CATALOGUE | 15

SUPERSTORM PROOF

The plane hit with such force that it sheared the left wing and float right off and, as the plane rapidly sunk, everyone was able to escape out the exits. For over nine hours, the plane was submerged some 6-8 feet under water, loosely held to the right pontoon! When we were finally allowed to recover our gear, I was planning for the worst, because the water damage on impact had destroyed just about everyone's gear. But when I opened the lid on my Peli™ 1650 case, I was astonished to find that there was very little water inside and everything was intact!

Tim Cothren, wildlife photographer



PELI LARGE CASES

1630 CASE

INTERNAL DIMS:
70.4 x 53.3 x 39.4 cm
(27.7" x 20.98" x 15.5")

EXTERNAL DIMS:
79.5 x 61.5 x 44.4 cm
(31.28" x 24.21" x 17.48")

LID/BOTTOM DEPTH:
8.3 cm / 30.8 cm (3.25" / 12.14")

WEIGHT:
16.33 kg (36 lbs) WITH FOAM
14.06 kg (31 lbs) NO FOAM



1640 CASE

INTERNAL DIMS:
60.2 x 61 x 35.3 cm
(23.7" x 24" x 13.9")

EXTERNAL DIMS:
69.1 x 69.9 x 41.4 cm
(27.2" x 27.5" x 16.3")

LID/BOTTOM DEPTH:
5.1 cm / 30.2 cm (2" / 11.9")

WEIGHT:
17.24 kg (38 lbs) WITH FOAM
15.42 kg (34 lbs) NO FOAM



1650 CASE

Similarly sized Peli Storm Case: iM2950

INTERNAL DIMS:
72.2 x 44.2 x 27 cm
(28.41" x 17.4" x 10.64")

EXTERNAL DIMS:
80.1 x 52.1 x 31.7 cm
(31.55" x 20.51" x 12.47")

LID/BOTTOM DEPTH:
4.6 cm / 22.5 cm
(1.81" / 8.84")

WEIGHT:
12.73 kg (28.06 lbs) WITH FOAM
10.9 kg (24.03 lbs) NO FOAM



1660 CASE

INTERNAL DIMS:
71.6 x 50.2 x 44.8 cm
(28.18" x 19.75" x 17.62")

EXTERNAL DIMS:
80 x 58.1 x 48.3 cm
(31.5" x 22.87" x 19")

LID/BOTTOM DEPTH:
8.9 cm / 35.9 cm
(3.5" / 14.12")

WEIGHT:
19.1 kg (42.11 lbs) WITH FOAM
15.5 kg (34.17 lbs) NO FOAM



1670 CASE

INTERNAL DIMS:
71.4 x 41.9 x 23.3 cm
(28.1" x 16.49" x 9.19")

EXTERNAL DIMS:
78.8 x 49.3 x 28.4 cm
(31.04" x 19.39" x 11.17")

LID/BOTTOM DEPTH:
4.6 cm / 18.8 cm (1.8" / 7.39")

WEIGHT:
11.8 kg (26 lbs) WITH FOAM
10.4 kg (23 lbs) NO FOAM



1690 CASE

INTERNAL DIMS:
76.5 x 63.8 x 39 cm
(30.13" x 25.13" x 15.36")

EXTERNAL DIMS:
84.9 x 72.1 x 44.8 cm
(33.43" x 28.4" x 17.65")

LID/BOTTOM DEPTH:
7.3 cm / 30.8 cm (2.86" / 12.14")

WEIGHT:
19.5 kg (43 lbs) WITH FOAM
15.42 kg (34 lbs) NO FOAM



*Other colours and configurations available upon minimum quantities. Check with your Customer Service representative for further details.

CASE CONTENTS NOT INCLUDED

1730 CASE

INTERNAL DIMS:

86.4 x 61 x 31.8 cm
(34" x 24" x 12.5")

EXTERNAL DIMS:

95.3 x 68.9 x 36.5 cm
(37.5" x 27.13" x 14.37")

LID/BOTTOM DEPTH:

6.4 cm / 25.4 cm (2.5" / 1")

WEIGHT:

17.24 kg (38 lbs) WITH FOAM
13.61 kg (30 lbs) NO FOAM



1780 CASE

INTERNAL DIMS:

104.4 x 54.7 x 37.8 cm
(41.12" x 21.54" x 14.88")

EXTERNAL DIMS:

114 x 64.3 x 41.9 cm
(44.9" x 25.32" x 16.5")

LID/BOTTOM DEPTH:

19.3 cm / 18.5 cm (7.58" / 7.3")

WEIGHT:

22.2 kg (49 lbs) WITH FOAM
17.4 kg (38.4 lbs) NO FOAM



0340 CASE

INTERNAL DIMS:

45.7 x 45.7 x 45.7 cm
(18" x 18" x 18")

EXTERNAL DIMS:

52.1 x 52.1 x 48.9 cm
(20.5" x 20.5" x 19.25")

LID/BOTTOM DEPTH:

11.4 cm / 34.3 cm (4.5" / 13.5")

WEIGHT:

13.5 kg (29.76 lbs) WITH FOAM
10.89 kg (24 lbs) NO FOAM



0350 CASE

INTERNAL DIMS:

50.8 x 50.8 x 50.8 cm
(2" x 2" x 2")

EXTERNAL DIMS:

57.2 x 57 x 54 cm
(22.5" x 22.43" x 21.25")

LID/BOTTOM DEPTH:

12.7 cm / 38.1 cm (5" / 15")

WEIGHT:

14.52 kg (32.01 lbs) WITH FOAM
11.79 kg (25.99 lbs) NO FOAM



0370 CASE

INTERNAL DIMS:

61 x 61 x 61 cm
(24" x 24" x 24")

EXTERNAL DIMS:

67.3 x 67.3 x 64.1 cm
(26.5" x 26.5" x 25.25")

LID/BOTTOM DEPTH:

12.7 cm / 48.3 cm
(5" / 19")

WEIGHT:

18.6 kg (41 lbs) WITH FOAM
14.5 kg (31.97 lbs) NO FOAM



0450 CASE

INTERNAL DIMS:

Varies by drawer configuration

EXTERNAL DIMS:

60.8 x 37.5 x 45.6 cm
(23.95" x 14.75" x 17.95")

LID/BOTTOM DEPTH:

N/A

WEIGHT:

21.95 kg (48.4 lbs)



0500 CASE

INTERNAL DIMS:

88.8 x 46.9 x 64.1 cm
(34.95" x 18.45" x 25.25")

EXTERNAL DIMS:

101.5 x 59.6 x 72.8 cm
(39.95" x 23.45" x 28.65")

LID/BOTTOM DEPTH:

5.7 cm / 58.4 cm
(2.25" / 23")

WEIGHT:

26.58 kg (58.6 lbs) WITH FOAM
22.68 kg (50 lbs) NO FOAM



0550 CASE

INTERNAL DIMS:

120.8 x 61.1 x 44.9 cm
(47.57" x 24.07" x 17.68")

EXTERNAL DIMS:

129.7 x 70 x 57.9 cm
(51.05" x 27.54" x 22.79")

LID/BOTTOM DEPTH:

8.1 cm / 36.8 cm
(3.19" / 14.49")

WEIGHT:

43.09 kg (95 lbs) WITH FOAM
35.92 kg (79.2 lbs) NO FOAM



shown with optional
caster wheels

PELI LARGE CASES

CASE CONTENTS NOT INCLUDED

*Other colours and configurations available upon minimum quantities. Check with your Customer Service representative for further details.

For the most up-to-date information, please visit www.peli.com or www.pelicatalogue.com

PELI CASES CATALOGUE | 17

LONG CASES

Ideal for weapons, but are also used by industrial workers for instruments and gear. Equipped with sturdy polyurethane wheels for ease of transport. See chart on page 22.

PELI LONG CASES



All Long Cases
are equipped
with wheels

1700 CASE

Similarly sized Peli Storm Case: iM3100

INTERNAL DIMS:

90.8 x 34.3 x 13.3 cm
(35.75" x 13.5" x 5.25")

EXTERNAL DIMS:

96.8 x 40.6 x 15.5 cm
(38.12" x 16" x 6.12")

LID/BOTTOM DEPTH:

4.4 cm / 8.9 cm (1.75" / 3.5")

WEIGHT:

7.7 kg (16.98 lbs) WITH FOAM
7.3 kg (16.09 lbs) NO FOAM



1740 CASE

INTERNAL DIMS:

104.1 x 32.8 x 30.8 cm
(40.98" x 12.92" x 12.13")

EXTERNAL DIMS:

112.2 x 40.9 x 35.6 cm
(44.16" x 16.09" x 14")

LID/BOTTOM DEPTH:

6.5 cm / 24.3 cm (2.56" / 9.57")

WEIGHT:

12.25 kg (27 lbs) WITH FOAM
9.98 kg (22 lbs) NO FOAM



1720 CASE

Similarly sized Peli Storm Case: iM3200

INTERNAL DIMS:

106.7 x 34.3 x 13.3 cm
(42" x 13.5" x 5.25")

EXTERNAL DIMS:

112.7 x 40.6 x 15.5 cm
(44.37" x 16" x 6.12")

LID/BOTTOM DEPTH:

4.4 cm / 8.9 cm (1.75" / 3.5")

WEIGHT:

8.6 kg (18.96 lbs) WITH FOAM
7.6 kg (16.76 lbs) NO FOAM



1750 CASE

Similarly sized Peli Storm Case: iM3300

INTERNAL DIMS:

128.3 x 34.3 x 13.3 cm
(50.5" x 13.5" x 5.25")

EXTERNAL DIMS:

134.6 x 40.6 x 15.5 cm
(53" x 16" x 6.12")

LID/BOTTOM DEPTH:

4.4 cm / 8.9 cm
(1.75" / 3.5")

WEIGHT:

11.6 kg (25.57 lbs) WITH FOAM
10.7 kg (23.59 lbs) NO FOAM



1770 CASE

INTERNAL DIMS:

138.6 x 39.6 x 21.9 cm
(54.58" x 15.58" x 8.63")

EXTERNAL DIMS:

145.8 x 46.9 x 28.5 cm
(57.42" x 18.48" x 11.23")

LID/BOTTOM DEPTH:

4.8 cm / 17.1 cm
(1.88" / 6.75")

WEIGHT:

18.8 kg (41.49 lbs) WITH FOAM
16.3 kg (36.01 lbs) NO FOAM



1780 CASE

INTERNAL DIMS:

104.4 x 54.7 x 37.8 cm
(41.12" x 21.54" x 14.88")

EXTERNAL DIMS:

114 x 64.3 x 41.9 cm
(44.9" x 25.32" x 16.5")

LID/BOTTOM DEPTH:

19.3 cm / 18.5 cm
(7.58" / 7.3")

WEIGHT:

22.2 kg (49 lbs) WITH FOAM
17.4 kg (38.4 lbs) NO FOAM



STUCK IN THE MUD?

During our trip across the Saharan Desert on our Africa Twin motorcycles, we went through a lot, traveling through sand, mud and water as well as over rock and asphalt. At one point, we attempted to cross a massive pool of mud that was blocking the road. The thinking was that going through at full speed would allow us to fly across the muddy area to the other side unscathed. Needless to say, that didn't happen. The bike was stuck for hours, but ultimately, we got it out. Later, we opened our Peli cases to find that the drone, sleeping bag, spare motor parts, food and clothes inside the cases remained perfectly dry and protected. There was never a doubt in our minds.

Honda Revival Team @hondarevivalteam

Photo by Augustin de Valente - Honda Revival Team

CASE CONTENTS NOT INCLUDED

*Other colours and configurations available upon minimum quantities. Check with your Customer Service representative for further details.

For the most up-to-date information, please visit www.peli.com or www.pelicatalogue.com

PELLI CASES CATALOGUE | 19

PELI CASE SPECIFICATIONS AND FEATURES

PELI CASES SPECIFICATIONS | FEATURES

CAT. NO.		INTERIOR DIMENSIONS (cm)	EXTERIOR DIMENSIONS (cm)	LID DEPTH	BOTTOM DEPTH	WEIGHT WITH FOAM	WEIGHT WITHOUT FOAM	BUOYANCY MAXIMUM
MICRO CASES	0915 0945 0955 0965	12.2 x 5.7 x 1.4	14.1 x 8.3 x 2.2	N/A	N/A	0.1 kg	N/A	N/A
	1010	11.1 x 7.3 x 4.3	14.9 x 10.3 x 5.4	1.8 cm	2.4 cm	0.19 kg	0.18 kg	0.23 kg
	1015	13.1 x 6.7 x 3.5	17 x 9.9 x 4.7	1.1 cm	2.4 cm	N/A	0.21 kg	0.54 kg
	1020	13.5 x 9 x 4.3	17.3 x 12.1 x 5.4	1.8 cm	2.4 cm	0.25 kg	0.25 kg	0.34 kg
	1030	16.2 x 6.7 x 5.2	19.1 x 9.8 x 6.2	1.8 cm	3.2 cm	0.28 kg	0.27 kg	0.45 kg
	1040	16.5 x 9.8 x 4.4	19.1 x 12.9 x 5.4	1.8 cm	2.4 cm	0.32 kg	0.32 kg	0.57 kg
	1050	16 x 9.3 x 7	20.3 x 12.9 x 7.9	1.8 cm	4.9 cm	0.38 kg	0.37 kg	0.79 kg
	1060	21 x 10.8 x 5.7	25.1 x 14.2 x 6.7	1.8 cm	3.7 cm	0.47 kg	0.45 kg	1.13 kg
SMALL CASES	1120	18.5 x 12.1 x 8.5	21.4 x 17.2 x 9.8	1.3 cm	6.5 cm	0.65 kg	0.61 kg	2.27 kg
	1150	21.1 x 14.7 x 9.5	24 x 19.8 x 10.9	1.9 cm	7.3 cm	0.79 kg	0.73 kg	3.63 kg
	1170	26.8 x 15.3 x 8	29.6 x 21.2 x 9.6	2.7 cm	5.3 cm	0.95 kg	0.89 kg	3.29 kg
	1200	23.5 x 18.1 x 10.5	27 x 24.6 x 12.4	3 cm	7.4 cm	1.3 kg	1.2 kg	5.45 kg
	1300	23.3 x 17.8 x 15.5	27 x 24.6 x 17.4	3 cm	12.5 cm	1.6 kg	1.4 kg	5.6 kg
	1400	30.1 x 22.8 x 13.1	34.7 x 29.5 x 14.6	3 cm	10.2 cm	2 kg	1.8 kg	9.1 kg
LAPTOP & TABLET CASES	1070CC	32.5 x 22.7 x 1.8	38.8 x 30.4 x 4.1	0.9 cm	0.9 cm	1.3 kg	1.1 kg	N/A
	1075	28.2 x 20.1 x 4.1	31.4 x 24.8 x 5.4	2.1 cm	2.1 cm	0.7 kg	0.6 kg	N/A
	1085	36.3 x 26.3 x 5	39.7 x 31.5 x 6.4	2.5 cm	2.5 cm	1.4 kg	1.2 kg	N/A
	1095	40.1 x 28.3 x 5.2	43.6 x 33.6 x 6.6	2.6 cm	2.6 cm	1.6 kg	1.4 kg	N/A
	1095CC	40.1 x 28.3 x 5.2	43.6 x 33.6 x 6.6	2.6 cm	2.6 cm	1.5 kg	N/A	N/A
	1470	39.9 x 27.2 x 9.8	42.9 x 33.6 x 11.4	3.7 cm	6.1 cm	2.5 kg	1.94 kg	11.3 kg
	1490	45.1 x 28.9 x 10.5	50.5 x 35.4 x 11.9	3.8 cm	6.7 cm	2.95 kg	2.48 kg	18.6 kg
	1490CC1	45.1 x 28.9 x 10.5	50.5 x 35.4 x 11.9	3.8 cm	6.7 cm	2.9 kg	2.5 kg	18.6 kg
	1495	47.9 x 33.3 x 9.7	54.9 x 43.8 x 12.4	2.8 cm	6.8 cm	3.8 kg	3.28 kg	20.5 kg
	1495CC1	47.9 x 33.3 x 9.7	54.9 x 43.8 x 12.4	2.8 cm	6.8 cm	5 kg	N/A	20.5 kg
	1495CC2	47.9 x 33.3 x 9.7	54.9 x 43.8 x 12.4	2.8 cm	6.8 cm	4.1 kg	N/A	20.5 kg
	1430	34.4 x 14.6 x 29.7	41.7 x 22.1 x 33.4	5.1 cm	24.6 cm	2.95 kg	2.54 kg	26.8 kg
MEDIUM CASES	1440	43.4 x 19.1 x 40.6	50 x 30.5 x 45.7	5.1 cm	35.6 cm	7.48 kg	6.58 kg	43.2 kg
	1450	37.4 x 26 x 15.4	40.9 x 33.1 x 17.5	4.4 cm	11.1 cm	2.9 kg	2.5 kg	13.61 kg
	1460	47.1 x 25.2 x 27.7	53 x 32.3 x 32.4	12.5 cm	15.3 cm	5.66 kg	3.97 kg	37.19 kg
	1500	42.8 x 28.6 x 15.5	47.1 x 35.7 x 17.5	4.6 cm	10.9 cm	3.2 kg	2.9 kg	22.68 kg
	1510	50.2 x 27.9 x 19.3	55.9 x 35.1 x 22.9	4.5 cm	14.7 cm	6.17 kg ^A	5.44 kg	29.1 kg
	1510M	50.2 x 27.9 x 19.3	59.8 x 36.5 x 27	4.5 cm	14.7 cm	8.1 kg	7.39 kg	N/A
	1520	44.9 x 31.8 x 17.1	49.9 x 39.3 x 19.1	4.5 cm	12.5 cm	4.24 kg	3.76 kg	28.6 kg
	1550	47.3 x 36 x 19.6	52.5 x 43.5 x 21.6	4.4 cm	14.9 cm	5.4 kg	4.8 kg	31.7 kg

^AWeight with Hybrid interior: 6.77 kg (14.94 lbs)

		<div><div>HYBRID INTERIOR</div><div>TREKPAK™</div><div>PADDED DIVIDERS</div><div>RUBBERISED HANDLES</div><div>PANEL FRAMES</div><div>PERSONALISED NAMEPLATE</div><div>LID ORGANISER</div><div>WHEELS</div></div>											
TEMPERATURE RANGE (Min/Max)	CERTIFICATES									COLOURS	CAT. NO.		
N/A											■	MC/SWC	MICRO CASES
-23 / 93° C	IP67										■ ■*	1010	
N/A	-										■*	1015	
-23 / 93° C	IP67										■ ■*	1020	
-23 / 93° C	IP67										■ ■*	1030	
-23 / 93° C	IP67										■ ■*	1040	
-23 / 93° C	IP67										■ ■*	1050	
-23 / 93° C	IP67										■ ■	1060	SMALL CASES
-40 / 99° C	IP67 • DEF STAN 81-41/STANAG 4280							0			■ ■ ■	1120	
-40 / 99° C	IP67 • DEF STAN 81-41/STANAG 4280							0			■ ■ ■	1150	
-40 / 99° C	IP67										■ ■ ■ ■*	1170	
-40 / 99° C	IP67 • DEF STAN 81-41/STANAG 4280							0			■ ■ ■ ■*	1200	
-40 / 99° C	IP67 • DEF STAN 81-41/STANAG 4280							0			■ ■ ■ ■*	1300	
-40 / 99° C	IP67 • MIL C-4150J • DEF STAN 81-41/STANAG 4280 • ATA 300							0	0		■ ■ ■ ■*	1400	LAPTOP & TABLET CASES
-23 / 49° C											■	1070CC	
-23 / 49° C											■	1075	
-23 / 49° C											■	1085	
-23 / 49° C											■	1095	
-23 / 49° C											■	1095CC	
-40 / 99° C	MIL C-4150J					S	0	0			■	1470	
-40 / 99° C	DEF STAN 81-41/STANAG 4280					S	0	0	0		■	1490	
-40 / 99° C	DEF STAN 81-41/STANAG 4280					S	0	0	S		■	1490CC1	
-40 / 99° C	IP67 • DEF STAN 81-41/STANAG 4280					S		0			■	1495	
-40 / 99° C	IP67 • DEF STAN 81-41/STANAG 4280					S		0	S		■ *	1495CC1	
-40 / 99° C	IP67 • DEF STAN 81-41/STANAG 4280					S		0	S		■	1495CC2	
-40 / 99° C	IP67 • DEF STAN 81-41/STANAG 4280				0	S	0	0	0		■ *	1430	
-40 / 99° C	IP67 • DEF STAN 81-41/STANAG 4280			0	S		0	0	S		■*	1440	
-40 / 99° C	IP67 • MIL C-4150J • DEF STAN 81-41/STANAG 4280			0	S	0	0				■ ■ ■ ■ ■ ■	1450	MEDIUM CASES
-40 / 99° C	IP67				S						■*	1460	
-40 / 99° C	IP67 • MIL C-4150J • DEF STAN 81-41/STANAG 4280 • ATA 300			0	S	0	0	0			■ ■ ■ ■ ■*	1500	
-40 / 99° C	IP67 • DEF STAN 81-41/STANAG 4280	0	0	0	S		0	0	S		■ ■ ■ ■ ■*	1510	
-40 / 99° C	IP57			0	S		0	0	S		■	1510M	
-40 / 99° C	IP67 • MIL C-4150J • DEF STAN 81-41/STANAG 4280			0	S	0	0	0			■ ■ ■ ■ ■ ■	1520	
-40 / 99° C	IP67 • MIL C-4150J • DEF STAN 81-41/STANAG 4280 • ATA 300		0	0	S	0	0				■ ■ ■ ■ ■*	1550	

* Other colours and configurations available upon minimum quantities. Check with your Customer Service representative for further details.

PELI CASE SPECIFICATIONS AND FEATURES

PELI CASES SPECIFICATIONS | FEATURES | ACCESSORIES

CAT. NO.		INTERIOR DIMENSIONS (cm)	EXTERIOR DIMENSIONS (cm)	LID DEPTH	BOTTOM DEPTH	WEIGHT WITH FOAM	WEIGHT WITHOUT FOAM	BUOYANCY MAXIMUM
LARGE CASES	1560	50.6 x 38 x 22.9	56 x 45.5 x 26.5	5.1 cm	17.8 cm	9.1 kg	7.7 kg	52.16 kg
	1560M	50.6 x 38 x 22.9	60.4 x 46.6 x 30.7	5.1 cm	17.8 cm	11 kg	9.66 kg	N/A
	1600	54.6 x 42 x 20.2	61.8 x 49.4 x 22.2	4.4 cm	15.5 cm	6.4 kg	5.9 kg	53.07 kg
	1610	55.1 x 42.2 x 26.8	62.8 x 49.7 x 30.3	5.2 cm	21.6 cm	10.2 kg	9.07 kg	54.4 kg
	1610M	55.3 x 42.4 x 27	66.5 x 58.4 x 34.7	5.2 cm	21.8 cm	13.2 kg	11.93 kg	N/A
	1620	54.3 x 41.4 x 31.9	63 x 49.2 x 35.2	5.2 cm	26.7 cm	11.8 kg	11.1 kg	68 kg
	1620M	54.6 x 41.7 x 31.9	66.5 x 58.4 x 39.6	5.1 cm	26.7 cm	14.3 kg	12.7 kg	N/A
	1630	70.4 x 53.3 x 39.4	79.5 x 61.5 x 44.4	8.3 cm	30.8 cm	16.33 kg	14.06 kg	159 kg
	1640	60.2 x 61 x 35.3	69.1 x 69.9 x 41.4	5.1 cm	30.2 cm	17.24 kg	15.42 kg	166 kg
	1650	72.2 x 44.2 x 27	80.1 x 52.1 x 31.7	4.6 cm	22.5 cm	12.73 kg	10.9 kg	82.1 kg
	1660	71.6 x 50.2 x 44.8	80 x 58.1 x 48.3	8.9 cm	35.9 cm	19.1 kg	15.5 kg	159 kg
	1670	71.4 x 41.9 x 23.3	78.8 x 49.3 x 28.4	4.6 cm	18.8 cm	11.8 kg	10.4 kg	82.6 kg
	1690	76.5 x 63.8 x 39	84.9 x 72.1 x 44.8	7.3 cm	30.8 cm	19.5 kg	15.42 kg	186 kg
	1730	86.4 x 61 x 31.8 cm	95.3 x 68.9 x 36.5	6.4 cm	25.4 cm	17.24 kg	13.61 kg	189 kg
	1780	104.4 x 54.7 x 37.8	114 x 64.3 x 41.9	19.3 cm	18.5 cm	22.20 kg	17.42 kg	226.8 kg
	0340	45.7 x 45.7 x 45.7	52.1 x 52.1 x 48.9	11.4 cm	34.3 cm	13.5 kg	10.89 kg	100 kg
	0350	50.8 x 50.8 x 50.8	57.2 x 57 x 54	12.7 cm	38.1 cm	14.52 kg	11.79 kg	122 kg
	0370	61 x 61 x 61	67.3 x 67.3 x 64.1	12.7 cm	48.3 cm	18.6 kg	14.5 kg	211 kg
	0450	Varies by drawer configuration	60.8 x 37.5 x 45.6	N/A	N/A	21.95 kg	N/A	N/A
	0500	88.8 x 46.9 x 64.1	101.5 x 59.6 x 72.8	5.7 cm	58.4 cm	26.58 kg	22.68 kg	354 kg
0550	120.8 x 61.1 x 44.9	129.7 x 70 x 57.9	8.1 cm	36.8 cm	43.09 kg	35.92 kg	371.95 kg	
LONG CASES	1700	90.8 x 34.3 x 13.3	96.8 x 40.6 x 15.5	4.4 cm	8.9 cm	7.7 kg	7.3 kg	62.1 kg
	1720	106.7 x 34.3 x 13.3	112.7 x 40.6 x 15.5	4.4 cm	8.9 cm	8.6 kg	7.6 kg	73 kg
	1740	104.1 x 32.8 x 30.8	112.2 x 40.9 x 35.6	6.5 cm	24.3 cm	12.25 kg	9.98 kg	121.11 kg
	1750	128.3 x 34.3 x 13.3	134.6 x 40.6 x 15.5	4.4 cm	8.9 cm	11.6 kg	10.7 kg	85 kg
	1770	138.6 x 39.6 x 21.9	145.8 x 46.9 x 28.5	4.8 cm	17.1 cm	18.8 kg	16.3 kg	127.01 kg
	1780	104.4 x 54.7 x 37.8	114 x 64.3 x 41.9	19.3 cm	18.5 cm	22.20 kg	17.4 kg	226.8 kg

PROTECTOR CASE™
COLOURS AVAILABLE



CASE ACCESSORIES



Check how to install all accessories through our easy step-by-step Tutorial videos



Lid Organisers



Replacement Foam



TrekPak™ Dividers



Padded Dividers



Yellow Padded Dividers



EZ-Click Molle Panel



Shoulder Straps

TEMPERATURE RANGE (Min/Max)	CERTIFICATES	HYBRID INTERIOR	TREKPAK™	PADDED DIVIDERS	RUBBERISED HANDLES	PANEL FRAMES	PERSONALISED NAMEPLATE	LID ORGANISER	WHEELS	COLOURS	CAT. NO.	
-40 / 99° C	IP67 • DEF STAN 81-41/STANAG 4280		O	O	S		O	O	S	■ ■ ■ ■ *	1560	LARGE CASES
-40 / 99° C	IP57			O	S		O	O	S	■	1560M	
-40 / 99° C	IP67 • MIL C-4150J • DEF STAN 81-41/STANAG 4280 • ATA 300		O	O	S		O	O		■ ■ ■ ■ *	1600	
-40 / 99° C	IP67 • DEF STAN 81-41/STANAG 4280		O	O	S		O	O	S	■ *	1610	
-40 / 99° C	IP57			O	S		O	O	S	■	1610M	
-40 / 99° C	IP67 • MIL C-4150J • DEF STAN 81-41/STANAG 4280			O	S		O	O	S	■ *	1620	
-40 / 99° C	IP57			O	S		O	O	S	■	1620M	
-40 / 99° C	IP67 • DEF STAN 81-41/STANAG 4280 • ATA 300 • MIL C-4150J			O			O	O	S	■ *	1630	
-40 / 99° C	IP67 • DEF STAN 81-41/STANAG 4280			O			O	O	S	■	1640	
-40 / 99° C	IP67 • MIL C-4150J • DEF STAN 81-41/STANAG 4280 • ATA 300		O	O	S		O	O	S	■ *	1650	
-23.3 / 99° C	IP67 • DEF STAN 81-41/STANAG 4280			O			O	O	S	■ *	1660	
-40 / 99° C	-								S	■	1670	
-40 / 99° C	IP67 • DEF STAN 81-41/STANAG 4280			O			O	O	S	■ *	1690	
-40 / 99° C	IP67						O		S	■ *	1730	
-40 / 99° C	DEF STAN 81-41/STANAG 4280						O		S	■ *	1780	
-40 / 99° C	IP67 • DEF STAN 81-41 /STANAG 4280			O			O	O		■	0340	
-40 / 99° C	IP67 • DEF STAN 81-41 /STANAG 4280			O			O	O	O	■	0350	
-40 / 99° C	IP67 • DEF STAN 81-41 /STANAG 4280			O			O	O	O	■ *	0370	
N/A	-								S	■	0450	
-40 / 99° C	-						O	O		■	0500	
-40 / 99° C	IP57						O	O		■	0550	
-40 / 99° C	IP67 • MIL C-4150J • DEF STAN 81-41/STANAG 4280								S	■ *	1700	LONG CASES
-40 / 99° C	DEF STAN 81-41/STANAG 4280						O		S	■ *	1720	
-40 / 99° C	IP66						O		S	■ *	1740	
-40 / 99° C	IP67 • DEF STAN 81-41/STANAG 4280						O		S	■ *	1750	
N/A	-								S	■	1770	
-40 / 99° C	DEF STAN 81-41/STANAG 4280						O		S	■ *	1780	

S = Standard feature
O = Optional accessory

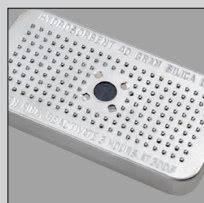
*Other colours and configurations available upon minimum quantities.
Check with your Customer Service representative for further details.

From custom nameplates and padded shoulder straps, to TSA Locks and humidity indicators, Peli™ offers a broad range of case accessories.

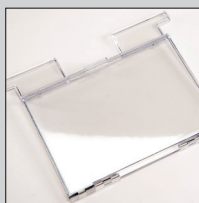
Refer to www.peli.com for specific accessories available for each case model



TSA Lock


Peli Desiccant
(Silica Gel)


Nameplates



Card Holder



Caster Wheel Kit



Pallet Riser



Lid Stays

LEARN MORE ABOUT + OUR PRODUCTS



www.peli.com



AVAILABLE IN 18 LANGUAGES!

www.pelicalogue.com



www.peli.com/webinars



EUROPE

EUROPE, MIDDLE EAST & AFRICA HEADQUARTERS

PELI PRODUCTS, S.L.U.
C/ Provença, 388 Planta 7
08025 • Barcelona, Spain
Tel +34 934 674 999
Fax +34 934 877 393
www.peli.com

FRANCE

PELI PRODUCTS FRANCE
S.A.S.
20/22 Rue des Petits Hôtels
75010 Paris, France
Tel +33 (0)1 44 83 95 63
Fax +33 (0)1 44 83 95 68
www.peli.com

UK

PELI HARDIGG UK
Unit 4, Brookfield Industrial Estate
Leacon Road
Ashford Kent TN23 4TU
Tel + 44 (0) 1233 895 895
Fax +44 (0) 1233 895 899
www.peli.com

U.S.A.

U.S.A. & GLOBAL HEADQUARTERS

23215 Early Avenue
Torrance, CA 90505 USA
Tel 310.326.4700
800.473.5422 (Outside CA)
Fax 310.326.3311
www.pelican.com

GERMANY

PELI PRODUCTS GERMANY GmbH
Düsseldorf Kö-Bogen
Business Center
Königsallee 2b, 5th Floor
40212 Düsseldorf, Germany
Tel +49 (0) 211 882 42 401
Fax +49 (0) 211 882 42 200
www.peli.com

UAE

PELICAN PRODUCTS FZE
JAFZA One Building A office 1511/1512
Jebel Ali Free Zone gate 5
P.O.Box 261008
Dubai – United Arab Emirates
Tel +971 4 8876550
Fax +971 4 8876549
www.pelican.com
www.peli.com

TURKEY

PELI PRODUCTS ANKARA
BRANCH OFFICE
Beştepe Mahallesi,
Nergis Sokak No:7/2
Via Flat İş Merkezi,
Plaza Cubes No:87
Tel +90 312 248 13 86
www.peli.com

PELICAN HARDIGG

147 North Main Street
South Deerfield, MA 01373
Tel (800) 542 73 44
Fax (413) 665 8330
www.pelican.com

We also have offices in Canada, Japan, China, Australia, South Korea and India

INJECTION MOULDED CASES - PELI LIMITED LIFETIME* GUARANTEE

Peli Products, S.L.U. ("Peli") guarantees its injection moulded products for a lifetime* against breakage or defects in workmanship. Peli™ injection molded cases are guaranteed to be watertight to a depth of 3.3 feet (1 meter) for 30 minutes (IP 67) if properly closed with undamaged o-ring in place unless otherwise stated. To the extent permitted by law, Peli's liability is limited to the case and not its contents or foam. All warranty claims of any nature are barred if the case has been altered, damaged or in any way physically changed, or subjected to abuse, misuse, negligence or accident.

For complete warranty details, see www.peli.com/warranty

* Lifetime Guarantee not applicable where prohibited by law.

Distributed by:



©2020 Peli Products, S.L.U. All trademarks are registered and/or unregistered trademarks of Pelican Products, Inc., its subsidiaries and/or affiliates. All details included in this catalogue are correct when printed but for most updated information please visit www.peli.com and www.pelicalogue.com.
Part No. 0030-000-101E DEC 20

Follow us on:



PELInsights



Check out our latest posts on Peli Cases, get to know our Pro Users and take part in our different programs.

This and more on the brand new PELI blog!



Watch the Peli cases video!

FEATURES



MIL C-41503
STAN AG-4280
DEF STAN 31-41
ATA COMPLIANCE

